

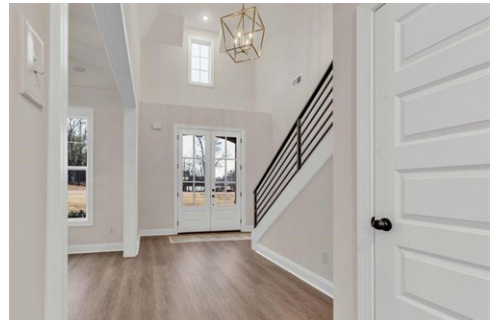


\$ 545,000



2007 College Rd, Southaven, MS 38672

- » Beds: 5 | Baths: 3 Full
- » MLS #: 10207699
- » Single Family | 3,200 ft²
- » More Info: [2007CollegeRdSouthaven.IsForSale.com](https://www.2007CollegeRdSouthaven.IsForSale.com)



Jennie Holliday
 (901) 334-6961 (mobile)
 (662) 548-2000 (office)
holliday@collins-maury.com
<https://www.hollidaysellshomes.com>



Coldwell Banker Collins-Maury
 3276 Goodman Rd E
 Southaven, MS 38672
 (662) 548-2000



OPEN HOUSE Sat April 4th, 11 am-1pm. Price Reducation! New Construction - Approx. 3,200 SF - Sycamore B plan offers spacious, open-concept living perfect for family gatherings & entertaining. The main level features a private primary suite with a luxurious salon bath & oversized walk-in closet. A second bedroom & full bath are also conveniently located downstairs-ideal for guests or multigenerational living. Step through the double front doors into a grand entryway showcasing a stunning wrought iron staircase, a formal dining room to your right, & a bright, open great room that flows seamlessly into the kitchen & breakfast area. The kitchen boasts custom soft-close cabinetry & plenty of counter space for the chef in the family. Large laundry room with built-in cabinets & room for fridge, Friend's side entry door, Covered back patio - perfect for relaxing in your private oasis, Upstairs you'll find 3 spacious bedroom or 2 bedrooms and bonus. 0.68 acres.

